

# DURDEN & HUNT

INTERNATIONAL



## St. Clements Avenue, Harold Wood RM3

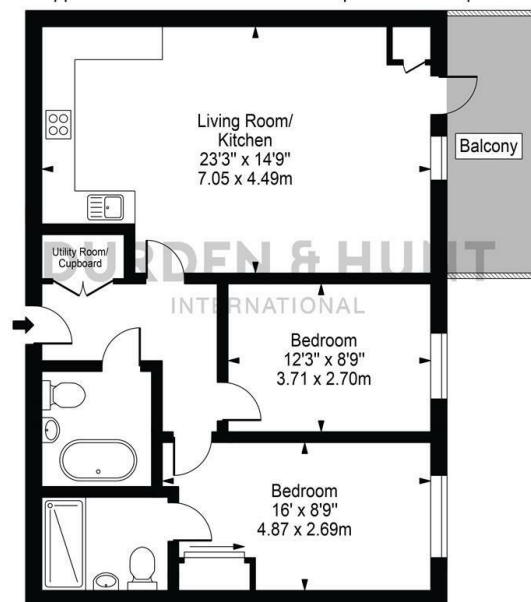
Price Guide £375,000

- Open Concept Living And Dining Area
- Ideally Located
- Underground Parking
- Bedroom With En Suite
- Great Transport Links
- Utility Room
- Modern Fitted Kitchen
- Two Stylish Bathrooms
- Large Balcony

159 High Street, Hornchurch, Essex, RM11 3YD  
01708 202 777

[hornchurch@durdenandhunt.co.uk](mailto:hornchurch@durdenandhunt.co.uk)  
<https://www.durdenandhunt.co.uk>

Freesia Lodge,  
St. Clements Avenue  
Approx. Gross Internal Area 787 Sq Ft - 73.13 Sq M



This floor plan should be used as a general outline for guidance only and does not constitute in whole or in part an offer or contract. Any intending purchaser or lessee should satisfy themselves by inspection, searches, enquiries and full survey as to the correctness of each statement. Any areas, measurements or distances quoted are approximate and should not be used to value a property or be the basis of any sale or let.

## Viewings

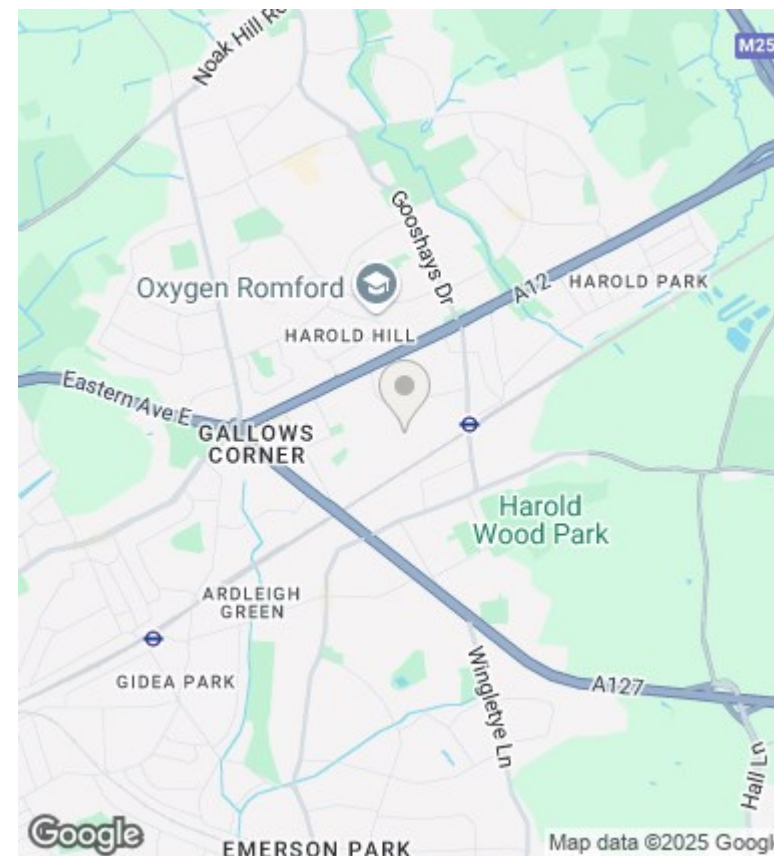
Viewings by arrangement only. Call 01708 202 777 to make an appointment.

## Council Tax Band

C

## EPC Rating:

B



Energy Efficiency Rating		
	Current	Potential
Very energy efficient - lower running costs		
(92 plus) A		
(81-91) B	84	84
(69-80) C		
(55-68) D		
(39-54) E		
(21-38) F		
(1-20) G		
Not energy efficient - higher running costs		
England & Wales	EU Directive 2002/91/EC	